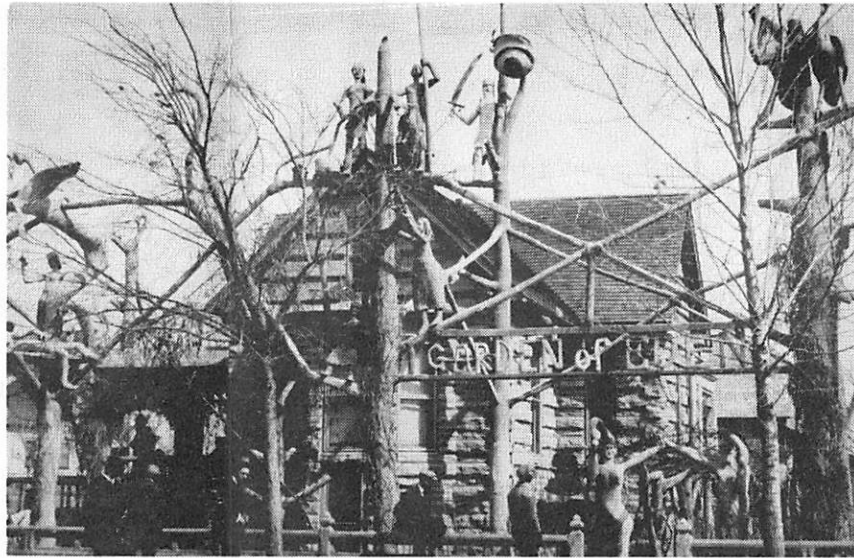


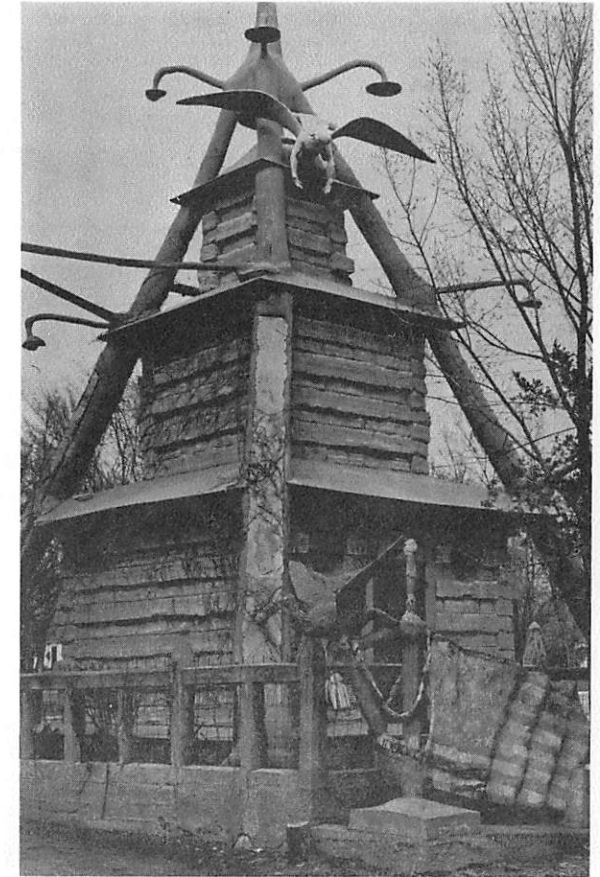
This odd Cabin Home was built in 1907 and later on the Garden of Eden, Mausoleum and other attractions were added, as time allowed the efforts of a disabled Civil War Veteran and retired farmer of 64 years, to proceed to do the apparently impossible with native limestone, cement and various woods.

Mr. Dinsmoor built his home of native limestone rock and aptly named it the "Rock Log Cabin", since all the rocks were cut and fitted like logs in a log cabin, except five, run full length just as did the logs of old-time log cabins. In fact, one of the rocks is twenty-seven feet long! The house consists of eleven rooms, a porch, a closet, and a cave. In the yard, Mr. Dinsmoor built a "Garden of Eden", containing, among other things, a walkway, fences, flower beds, a U. S. flag, an Indian, and the crucifixion of Adam and Eve, and a visitation. By 1927, he had used over 115 tons of about 2,273 sacks of cement.

The actual figures of Adam and Eve in the "Garden of Eden" are on the west side of the house. On the north are cement figures representing modern civilization; on the south he built the visitors dining hall and bird and animal cages.



To the east of the Cabin Home, Mr. Dinsmoor built a 40 ft. high- mausoleum of native limestone, again using rock which run the full length of the structure. He also built his own coffin, using cement for its construction. At his death in 1932 he was placed in his coffin in the mausoleum with his first wife.



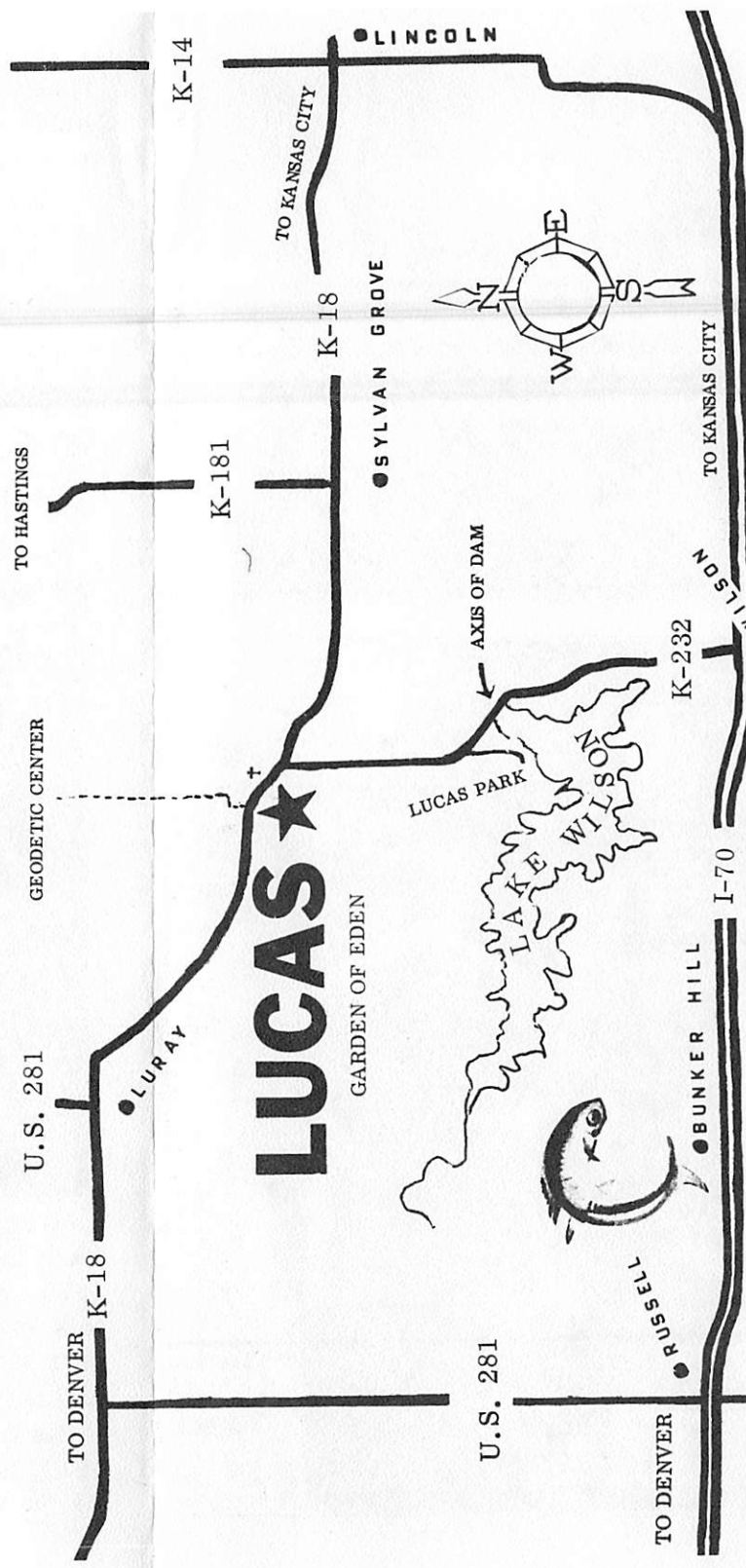
Mr. Dinsmoor was born in 1843. Married his first wife, on horseback, in 1870. Was 64 years old when he built this stone log cabin in 1907 - spent the next 22 yrs. building the Garden of Eden and his mausoleum.

His first wife died in the spring of 1917. In the spring of 1924, at the age of 81, he was married to a 20 year old girl.

LUCAS, in Russell County Kansas, has many fine businesses; a 24 hour Service Station-24 hour Cafe Service-Fine Theatre-Hotel-Trailer Park-Three fine Churches. We have an excellent 2,900 ft., hard surface lighted Air Strip which has 24 hour Cafe Service every day.

We invite you to visit our community and discover for yourself the friendly progressive attitude of our people.

The ONLY place in the World where you can see the "GARDEN of EDEN" and buy Brants Bologna.



LUCAS, KANSAS is on State Highways K-18 and K-232 -- Is but 16 miles north of Interstate 70 on beautiful LAKE WILSON ROAD.

# GARDEN OF EDEN

Lucas, Kansas

Lucas, Kansas, a town of 600 population, has the most unique home for living or dead on earth-according to its builder-S. P. Dinsmoor - an American born March 8, 1843.



S. P. DINSMOOR  
1843 ----- 1932