

**Take a Break
IT'S LATER
THAN YOU THINK**

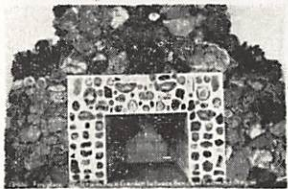
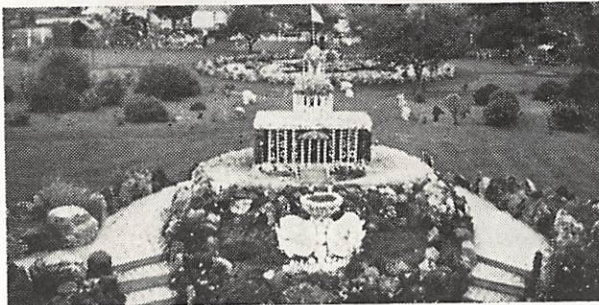


see . . .

**Petersen's
Rock
Garden**

between Bend
and Redmond

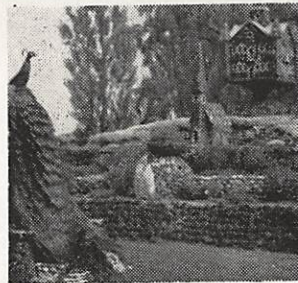
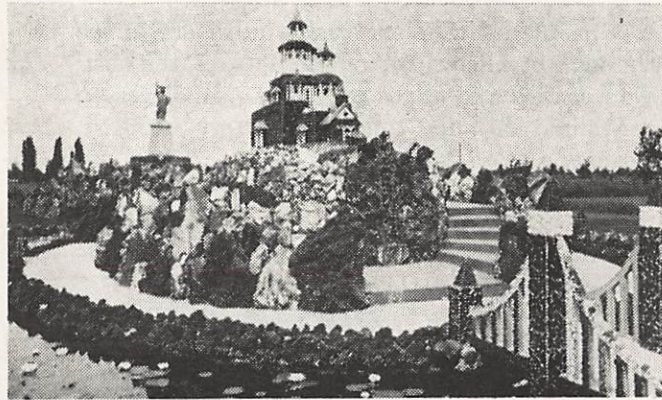
See Rocks from Outer Space!



See this amazing fireplace
with its rare pieces of cut
and polished agate.

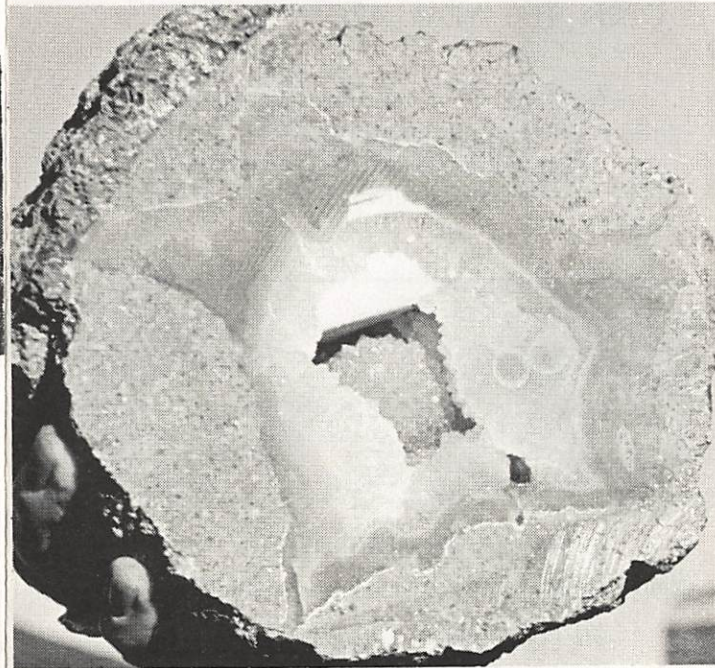
. . . see Central Oregon's
wonderland of beautiful rock
creations.

SEE ROCKS FROM WAY OUT!



Proud Peacocks

Always ready to pose for
the many photography fans,
proud peacocks strut about
the Garden displaying their
beautiful plumage.



Bring the Family . . . let's all go . . .



. . . to Central Oregon's Wonderland

of Beautiful Rock Creations

**see Nature's Own
Crystal Ball!**

found in an Ochoco Thunderegg dug at Lucky
Strike Mine. It's just one of thousands of
outstanding exhibits on display in the museum
at —

**Oregon's
Famous**

PETERSEN'S

Rock Garden

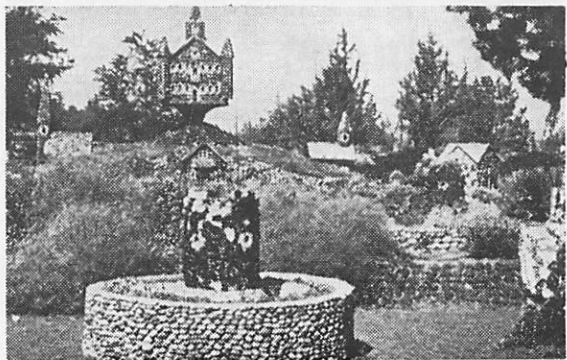
COLORFUL SPECTACLE OF MAN'S HANDIWORK
Between Bend and Redmond

Petersen's Rock Garden is a monument to the industry, perseverance, and above all, the love of natural beauty paramount in the life of Rasmus Petersen. Yearly the Garden's fame spreads.

A Danish immigrant farmer, Rasmus Petersen came to Central Oregon in 1906. He became interested in rock collecting as a leisure-time activity along about 1935.

As a hobby, Mr. Petersen began constructing bridges, towers, terraces, buildings and ponds using the thousands of different specimens of every type and kind of rock — agate, jasper, obsidian, opal, lava and volcanic cinders.

SOUVENIRS AND CURIOS
FLUORESCENT MINERAL DISPLAY



People came in increasing numbers to see the semi-precious gemstone structures, the obsidian castles and agate mansions. Mr. Petersen continued building and the visitors came in throngs.

By 1940, Mr. Petersen quit farming to devote all his time to the work he loved. Millions of rocks went into the undertaking.

Rasmus Petersen died in the garden he loved August 3, 1952, leaving as his heritage his deep appreciation of nature's bounty reflected in the brilliant, unforgettable beauty of his handiwork.

OPEN 365 DAYS A YEAR
HOURS: 7 A.M. TO 9 P.M. *Summer*
8 a.m. to Dusk Balance of Year

OPEN THE YEAR AROUND

Two hundred thousand visitors sign the guest register annually, many for the second or third time. Many Central Oregon residents make the trip to Petersen's Rock Garden several times each year.

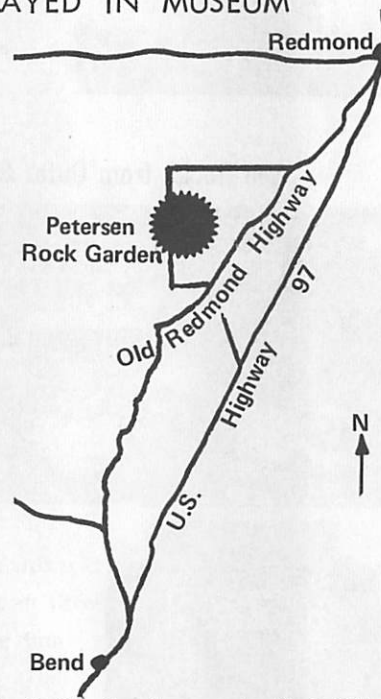


YOU'LL BE SURPRISED . . .
Central Oregon's Wonderland of Beautiful Rock Creations!

PETERSEN'S ROCK GARDEN
Between Bend and Redmond

In addition to the magnificent rock displays, the grounds have been beautified. Flowers, trees, a luxurious lawn complement the rocks. Peacocks roam at will. Many displays are enhanced with lagoons, in which lilies grow profusely. ~~In the evening the Garden is lighted into a miniature work of its own.~~ You'll enjoy an entire day at the Garden. There are many attractions — a big parking area, free picnic grounds, rock fireplaces (you furnish wood). Everything is casual and relaxed. At each of the three entrances you'll see small contribution boxes on giant blocks of petrified wood. You drop your money as you go in, or, if you have no change, as you leave. The amount is up to you.

RAREST STONES
DISPLAYED IN MUSEUM



Petersen's Rock Garden is easy to find. It's between the towns of Redmond and Bend. Well-marked, paved roads lead off Hwy. 97 west to the Rock Garden 2 miles and a half away.