

ST. EOM'S PASAQUAN COMPOUND

Condition Report and  
Recommendations for  
Repair and Maintenance

by  
Mark Kingsley

from a site survey  
conducted  
January 25 - 27, 1988

prepared for  
The Columbus Museum  
Columbus, Georgia

MARK KINGSLEY

FINE ART CONSERVATION

---



819 SPRING GARDEN ST.  
GREENSBORO, NC 27403 919-275-8240

## ST. EOM'S PASAQUAN COMPOUND, MARION COUNTY, GEORGIA

A. Condition Report

Pasaquan is decaying. Created as an extraordinarily clear utopian vision, it is now partial. The site is in danger of being misinterpreted and misunderstood.

My purpose in conducting this survey is to understand and preserve the vision and aesthetic intentions of Pasaquan's creator, the late Eddie Owens Martin (a.k.a. "St. EOM"), and to make recommendations for the site's repair and continued maintenance. Pasaquan at peak condition is recorded in photographs appearing in Tom Patterson's book, St. EOM in The Land of Pasaquan, in Dana Atchley's video documentary of the site (filmed in the early 1980s), and in numerous photographs of the site taken in the late 1970s and early 1980s. These photographs and video footage show a clearly ordered, geometrically precise visual and kinetic statement.

During the life of its creator, Pasaquan was as carefully worked and cultivated as a Zen rock garden. Two years of neglect and decay since the artist's death have threatened the site's meaning. Its condition is integral to its interpretation. Although the design is inspired by ancient ruins, it wasn't intended to be viewed in ruination. Contrast this with Howard Finster's "Paradise Garden"--another well-known folk art environment in Northwest Georgia, which is maintained in an organic, fragmented style. Pasaquan's color clarity and geometric order are essential to its artistic and spiritual purpose.

Initially, St. EOM's studio and existing original materials will be used to maintain continuity, and St. EOM's assistant Scotty Steward will consult on all restorations. The artist's working techniques and materials must be used as our primary resources.

The artists chosen for the conservation team (see F., below) are all academically trained artists with a dedication to preserving indigenous artforms. They have all expressed a willingness to live on site for the duration of the work and devote extra time to the repair and preservation effort.

B. Exterior Conservation Priorities

1. Termite damage. Treat all interior and exterior wood surfaces.
2. Fill fissures in concrete totems and walls with hydraulic cement.
3. Seal all painted surfaces with waterproof sealer.

(continued)

**B. Exterior Conservation Priorities (continued)**

4. Repaint all flaking areas (approximately 60% of total surfaces).
5. Remove vines and antbeds along walls, totems and house.
6. Restore missing concrete discs along walkway to front door.
7. Restore broken walls on gas house (structure #3 on accompanying map).
8. Restore cracked column top on east side wall.
9. Remove pecan tree undermining rear section of wall behind pagoda (structure #2 on map); seal and repaint cracks in wall resulting from tree's growth.
10. Replace pine lintel panels on entrance totems.
11. Replace all missing sculpted faces and discs on walls and house with existing pieces in studio.
12. Restore missing portion of sculpted snake atop wall near gas house (structure #3 on map).
13. Replace shingles around front portion of house (structure 1-A on map) with existing round shingles stored in studio (1-B).
14. Replace two metal shingles missing from front wall.

**C. Conservation of Grounds**

1. Cut tall grass and weeds in yard, especially around walls and buildings. Riding lawn-mower needed for continued grounds maintenance.
2. Fertilize and maintain lawn.
3. Dead oak tree near house in front yard to be removed.
4. Replace high-intensity lightbulb in outdoor fixture on pole near gas house (#3 on map).

**D. Conservation of Interior (structures 1 and 1-A on map)**

1. Leaking water in front room ceiling. Check circular roof vent above and seal up.
2. Leaking sink in kitchen.
3. Clean murals in kitchen (food and grease splashes).
4. Place mothballs in all robes and valuable fabric art.
5. Place No-Pest Strips in all rooms and replace regularly.
6. Clean and seal interior murals and reliefs.
7. Clean studio, kitchen and ritual room (rear of structure 1-A on map).
8. Replace and/or repair damaged beaded curtains in doorways.

(continued)

E. Budget

- For grounds:
1. Riding lawn mower (preferably John Deere, since they can be repaired and maintained by local John Deere dealer), \$1,000 - \$2,000.
  2. Assistant to Scotty Steward for grounds maintenance, \$5-\$7/hour, 50 hours. Approx. \$300.
  3. Estimate from power company to change outdoor bulb.
  4. Estimate to fell dead tree in front yard and pecan tree undermining wall behind pagoda (including root system of pecan tree).
  5. Fertilizer (Rainbow brand used by the artist).
  6. Mothballs and No-Pest Strips. Approx. \$30.
  7. Estimate for termite and fire ant extermination.

## For conservation:

1. Conservation supervisor (Mark Kingsley) to stay on site to work and coordinate conservation team and volunteer workers. 30 days @ \$100/day = \$3,000.
2. Conservation team: five-artist team to work 8-10 hours/day, 6 days/week for four weeks (24 working days) @ \$350/week per artist. Total labor, \$7,000.
3. Expenses for conservation supervisor and team:
  - 2 vehicles round-trip Greensboro, N.C. to Buena Vista, GA, approx. 1,000 miles @ 18¢/mile = \$180 x 2 cars = \$360. Plus \$300/week food allowance x 4 weeks = \$1,200. Total expenses, \$1,560.
3. Materials:
  - a. Hydraulic cement, 60 lbs. @ \$1/lb. = \$60.
  - b. Waterproof sealer for all exterior surfaces (Ace sealer), \$16/gallon, 30 gallons = \$480.
  - c. Sherwin-Williams paint for retouching exterior painted surfaces, 20 gallons @ \$18/gallon = \$360.
  - d. Gainsborough's Super Emulsion cleaner, 32 oz. containers @ \$25 each, 96 oz. = \$75.
  - e. Paint thinner (mineral spirits), 2 gallons @ \$18/gallon = \$36.
  - f. Paintbrushes for 6-10 people, approx. \$110.

F. Conservation Team

1. Greensboro (N.C.) conservation team:
  - a. Jack Stratton
  - b. Joe Dunn
  - c. Mike Northius
  - d. Cathy Schlosser
  - e. Eric Robert

(continued)

F. Conservation Team (continued)

2. Volunteers

a. Scotty Steward

b. Ginger Swint

c. Bobby Swint

(additional volunteers to be recruited from Buena Vista, Columbus and area college and university art departments--e.g., Atlanta College of Art, Mercer University, etc.)

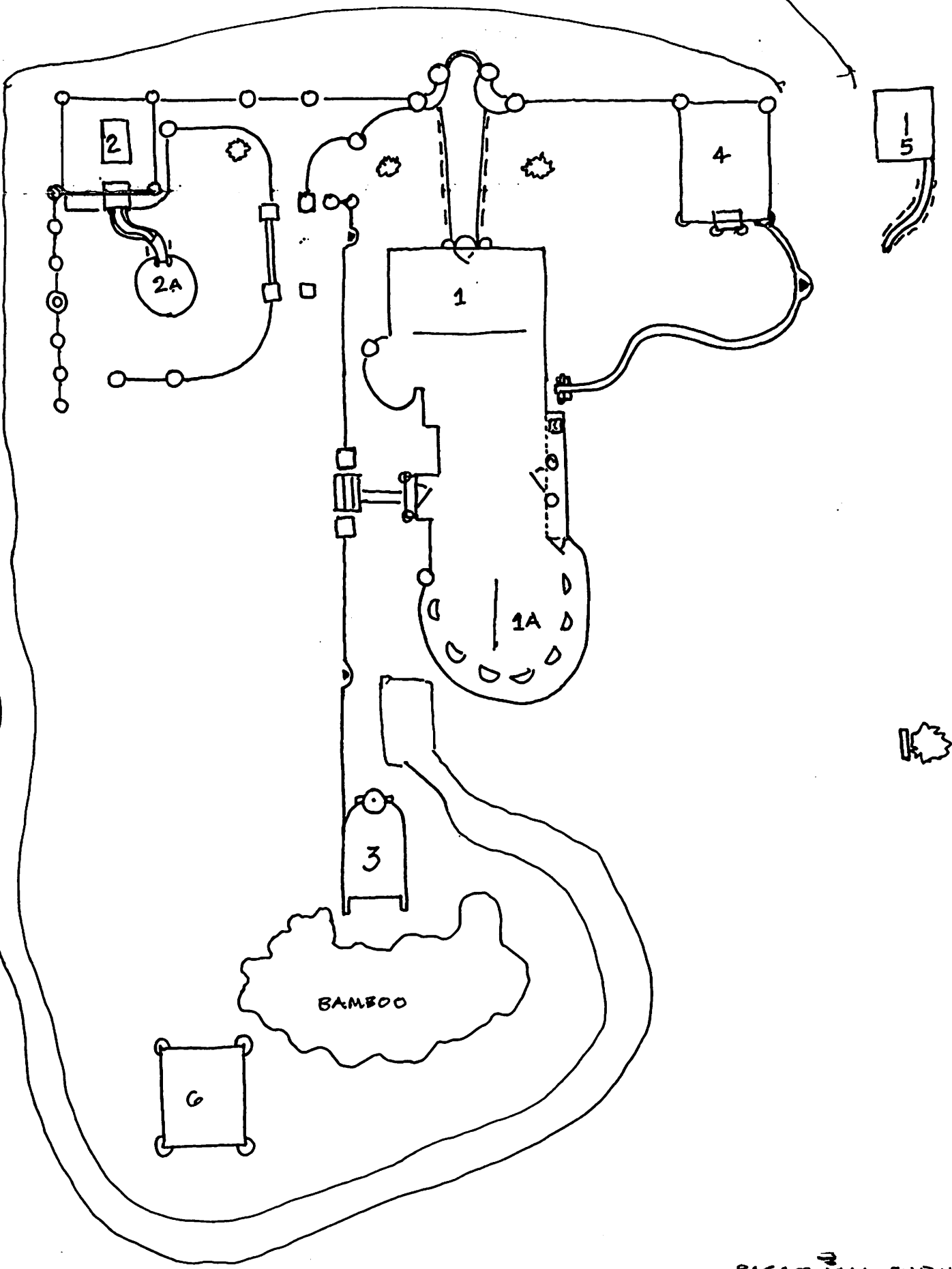
G. Examination Sheets with Polaroid photos as examples of damage to be repaired

Hand-delivered to Fred Fussell after site survey on January 27.

H. Site Map (see next page)

Map key:

1. Original house as modified by St. EOM
- 1-A. Addition to original house (studio and ritual room)
2. Pagoda/well house
- 2-A. Dance platform
3. Gas house (contains liquid gas storage tank)
4. Garage
5. Uncompleted "reading room" structure
6. Uncompleted "pagoda" structure



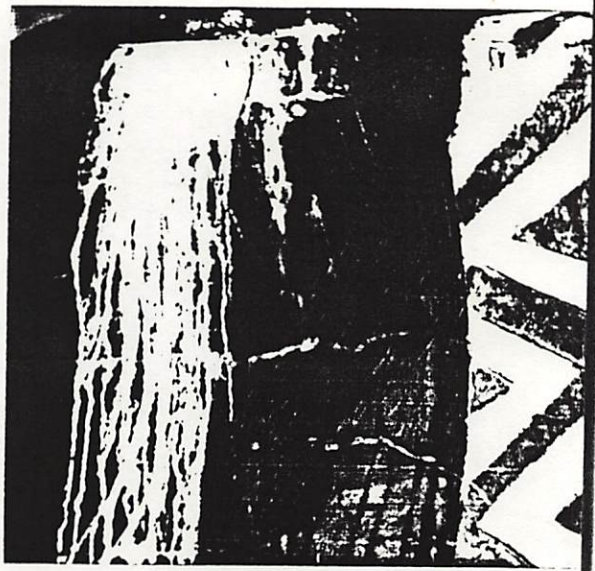
PASAQUAN SURVEY  
PLAN - 1988

Here are examples  
of the field reports  
made in 1987.  
There are 20 more pages.

DATE 1-28-87

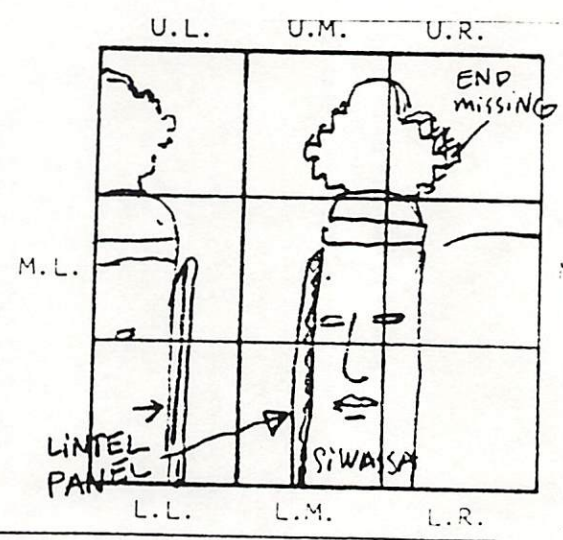
819 SPRING GARDEN ST  
GREENSBORO, NC 27403 919-275-9240  
LABORATORY EXAMINATION AND CONDITION REPORT

1. ARTIST ST, EDM  
2. TITLE ENTIRE TOTEMS SIWASSA + SIWASSA  
3. SIZE H. 9' W. 2 1/2' T.  
4. OWNER  
5. PROVENANCE ARTIST  
6. PHOTOGRAPHS ✓  
7. FRAME  
8. S. MARK AND MARKS



LIME RUN ON SIWASSA

9. DAMAGE AND LOSS:  
PUNCTURES  
LIME RUNNING  
TEARS  
CHECKS ✓ MAJOR FISSURE SIWASSA  
SURFACE DIRT LIME ACCUMULATION - BOTH



10. FLEXIBILITY  
11. FUNGUS OR INSECTS ✓ ROTTEN LINTEL PANELS - REPLACE  
12. PREVIOUS RESTORATION

3. RECOMMENDED RESTORATION
- FILL CRACKS WITH HYDRALIC LIME
  - REPLACE LINTEL PANELS
  - REMOVE LIME
  - SEAL
  - RETOUCH

819 SPRING GARDEN ST  
GREENSBORO, NC 27403 919-275-9240  
LABORATORY EXAMINATION AND CONDITION REPORT

1. ARTIST ST ESM

2. TITLE CURVED WALL BETWEEN #4 GARAGE - HOUSE

3. SIZE H. 40' W. 3'-10" T. 1'

4. OWNER

5. PROVENANCE

6. PHOTOGRAPHS

7. FRAME

8. SUPPORT AND MARKS

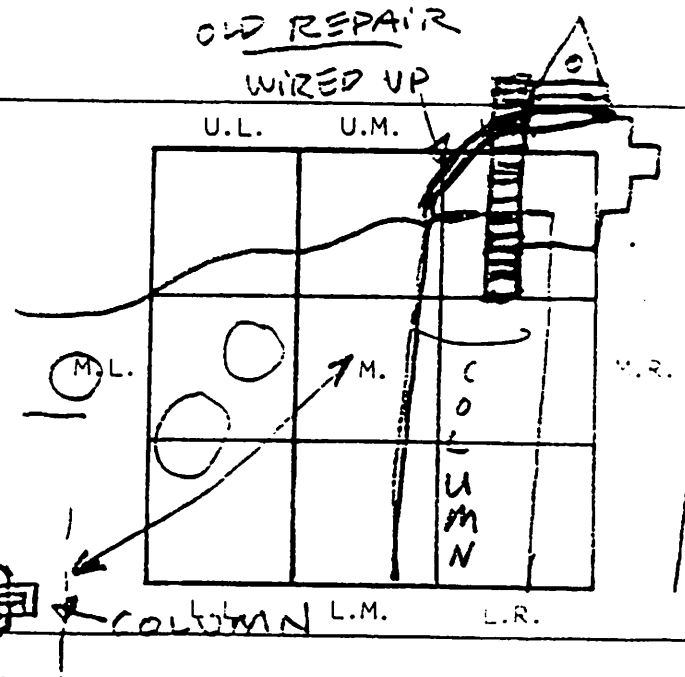
9. DAMAGE AND LOSS:

PUNCTURES - PLANTER - SEVERE  
- CRACKING

TEARS - SNAKE - CRACKING

CHECKS - COLUMN AT END  
OF WALL - VERY CRITICAL

SURFACE DIRT FALLING OFF



SNAKE

10. FLEXIBILITY

11. FUNGUS OR INSECTS

12. PREVIOUS RESTORATION

WALL FADING



13. RECOMMENDED RESTORATION
- RESTORE COLUMN TOP
  - PEGS + EPOXY
  - REPAINT WALL
  - RESTORE PLANTER



DATE 1.23.23

319 SPRING GARDEN ST  
GREENSBORO, NC 27403 919-275-9240  
LABORATORY EXAMINATION AND CONDITION REPORT

1. ARTIST ST ECM

2. TITLE GAS TANK HOUSING

3. SIZE H. 10' W. 4.75' T. 1.6'

4. OWNER

5. PROVENANCE

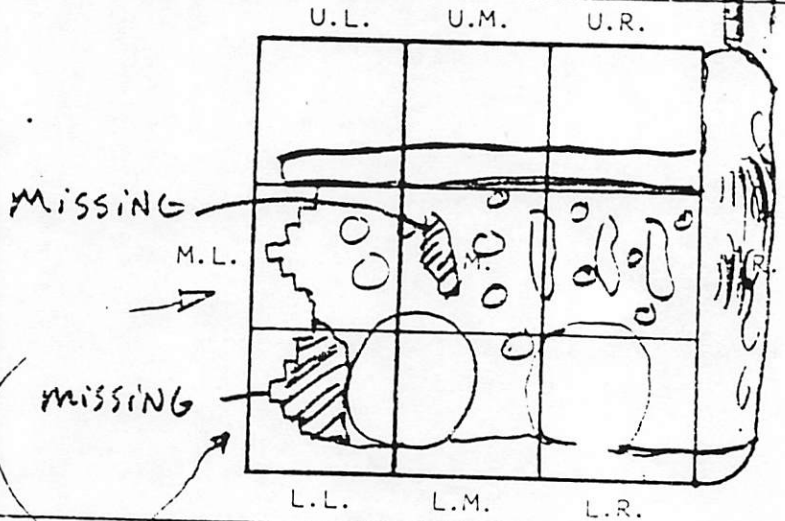
6. PHOTOGRAPHS

7. FRAME

8. SUPPORT AND MARKS GAS TANK HOUSING  
. BACK FIN MISSING  
- RELIEF MISSING

9. DAMAGE AND LOSS:

PUNCTURES



13. RECOMMENDED RESTORATION  
- REPLACE  
- RETOUCH